



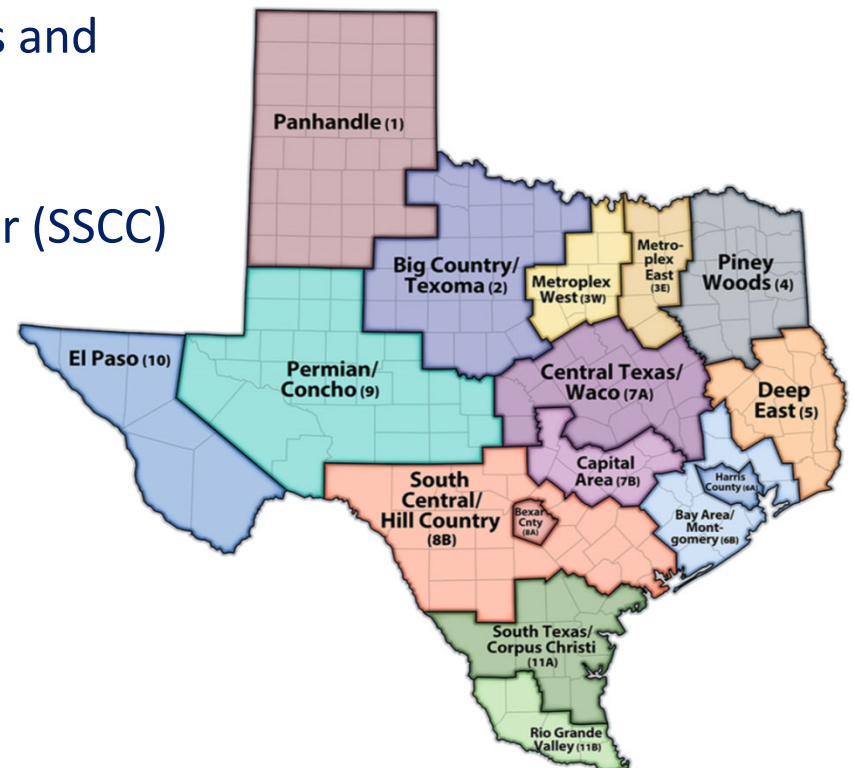
TEXAS
Department of Family
and Protective Services

Community-Based Care 101

January 2025

Discussion Topics

- Community-Based Care (CBC) Goals and Background
- Single Source Continuum Contractor (SSCC) Contract Information
- CBC Implementation
- CBC Resources



What is Community-Based Care (CBC)?

CBC is Texas' model of providing foster care services, which gives **local communities** the flexibility to draw on **local strengths** and **resources** and find **innovative** ways to meet the unique and individual needs of children and their families.

CBC includes many of the services that Child Protective Services (CPS) provided in the DFPS legacy system including foster care, case management, kinship, and reunification services.

What are the Goals of CBC?

The goals of CBC are to:

- Increase the number of children and youth placed with their siblings and in their home communities;
- Increase the number of children and youth who remain in their school of origin;
- Decrease the average time children and youth spend in foster care before achieving positive permanency;
- Decrease the number of moves children and youth experience while in foster care;
- Decrease the duration and intensity of services that children and youth need while in foster care due to improved well-being and behavioral functioning; and
- Create robust and sustainable service continuums in communities throughout Texas.

Legal Basis for CBC

- It is the intent of the Texas legislature for DFPS to contract with community providers of child welfare services, including direct case management; Tex. Fam. Code §264.151 and §264.158.
- Single Source Continuum Contractors (SSCCs) assume all of the statutory duties of DFPS per Tex. Fam. Code §264.161.
- Legal representation in child protection cases is provided in the same manner as DFPS, Tex. Fam. Code §264.163, i.e. represented by the county attorney, district attorney, criminal district attorney, or attorney general per Tex. Fam. Code §264.009.

Community-Based Care Background

Public Private Partnership

Formed in 2010, tasked with creating the model for Foster Care Redesign

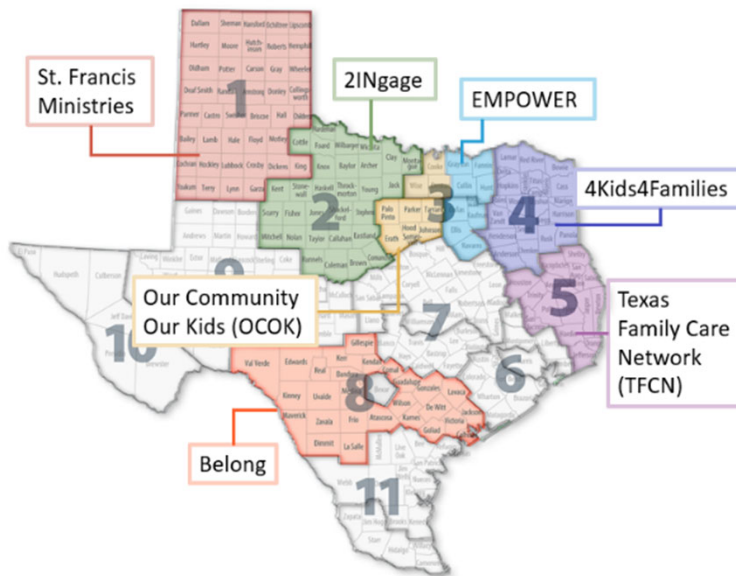
Foster Care Redesign

In 2011, Senate Bill 218 codified the PPP's recommendations and allowed the department to move forward with implementation of the Foster Care Redesign (FCR) model.

Community-Based Care

In 2017, Senate Bill 11, 85th Texas Legislature built off the foundation of the FCR model, to further advance the system through the establishment of CBC. CBC added the case management responsibility to the SSCC contract.

What is a Single Source Continuum Contractor (SSCC)?



- A single contractor in each designated geographic area (community area) creates a network of services, foster homes, and other living arrangements and, when ready, provides case management for each child as well.
- CPS works with each contractor (SSCC) to carefully manage the transition from traditional foster care to community-based care.



SSCC Applications

Request for Application (RFA) Process

- Posted at least once or twice per biennium (2 years)
- Community areas follow DFPS regional boundaries

Unsolicited Proposal Process

- Proposals to contract for community areas outside of a posted RFA are allowed per Texas Family Code [§264.157\(b\)](#)
- Posted on the [HHSC webpage](#)
- Communities select their area (contiguous counties, keep county boundaries, and encouraged to keep judicial boundaries)
- Only in areas not currently under an SSCC

Applicant Requirement

- Applicant must be either a non-profit with majority of the board residing in Texas or a governmental entity

CBC Contract Information

Performance Measures

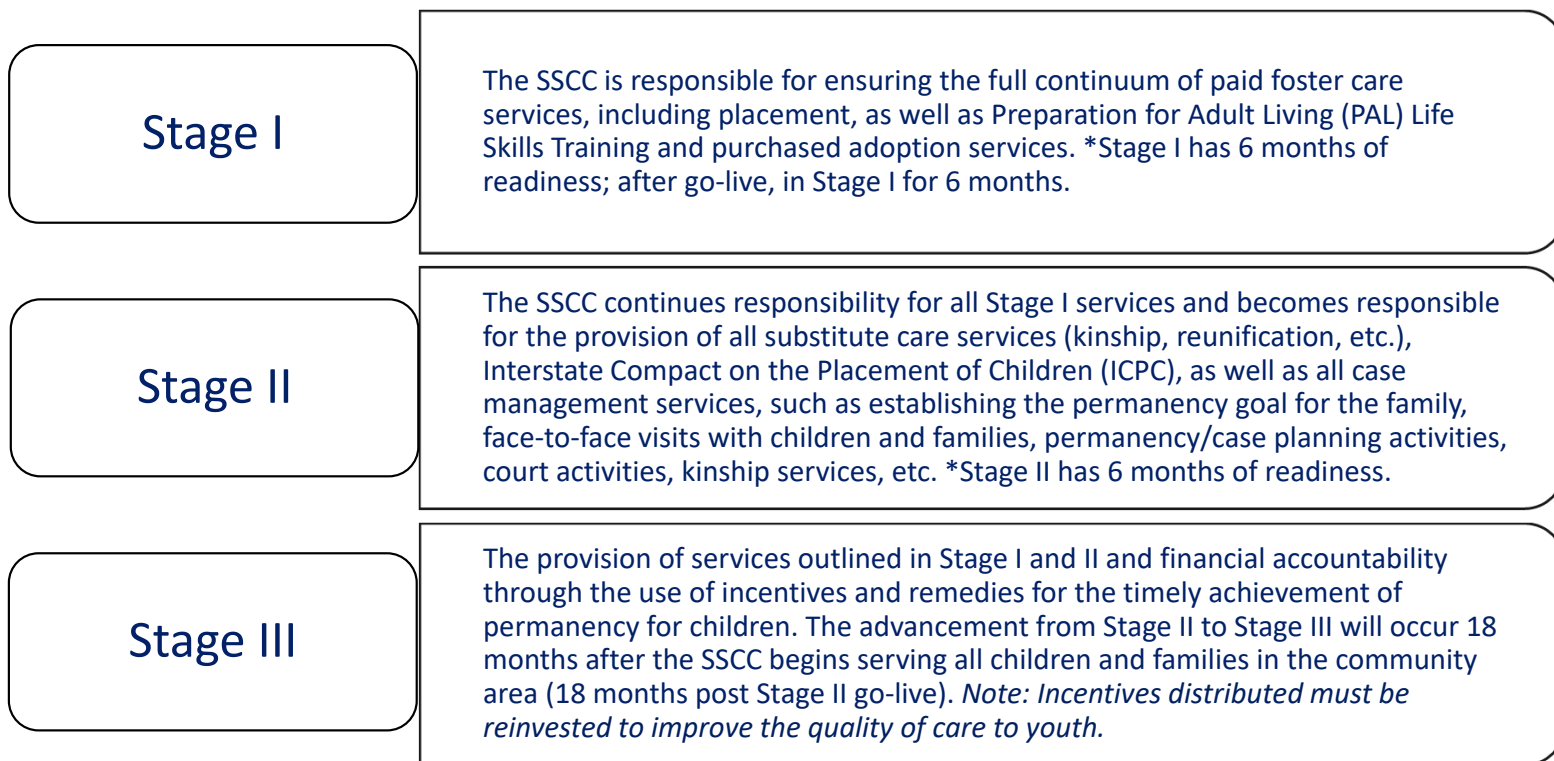
- a. Contract performance measures tie back to child safety, permanency, and wellbeing.
- b. Additional performance measures (for Stage II) include % of children and youth that attend school in their school of origin and the percentage of children/youth that are placed with kin.
- c. Stage III, financial incentives and remedies tied directly to time child spends in paid foster care before exiting to reunification, kinship, or adoptive placement.

Monitoring and Oversight

- a. Multi-Disciplinary Team approach to monitoring:
 - 0 CBC Contract manager is responsible for ensuring contract adherence, fiscal monitoring, and oversight of contractor performance in collaboration with the multi-disciplinary team.
 - 0 Regional CBC Administrator (CBCA), oversees implementation in each area and tracks case specific issues to resolutions. Noted trends are elevated to contract manager to address.
 - 0 DFPS Office of Data and Systems Improvement program supports Continuous Quality Improvement strategies in the community area, through monthly and quarterly data reviews with DFPS and SSCC.
 - 0 Case Management Oversight (CMO) staff complete case reads in order to support case management oversight and provide technical assistance.

SSCC contracts have a five-year term with an optional one-time five-year renewal.

Stages of CBC Implementation



*Entry into each stage is subject to a review of readiness by DFPS and OCBCT.

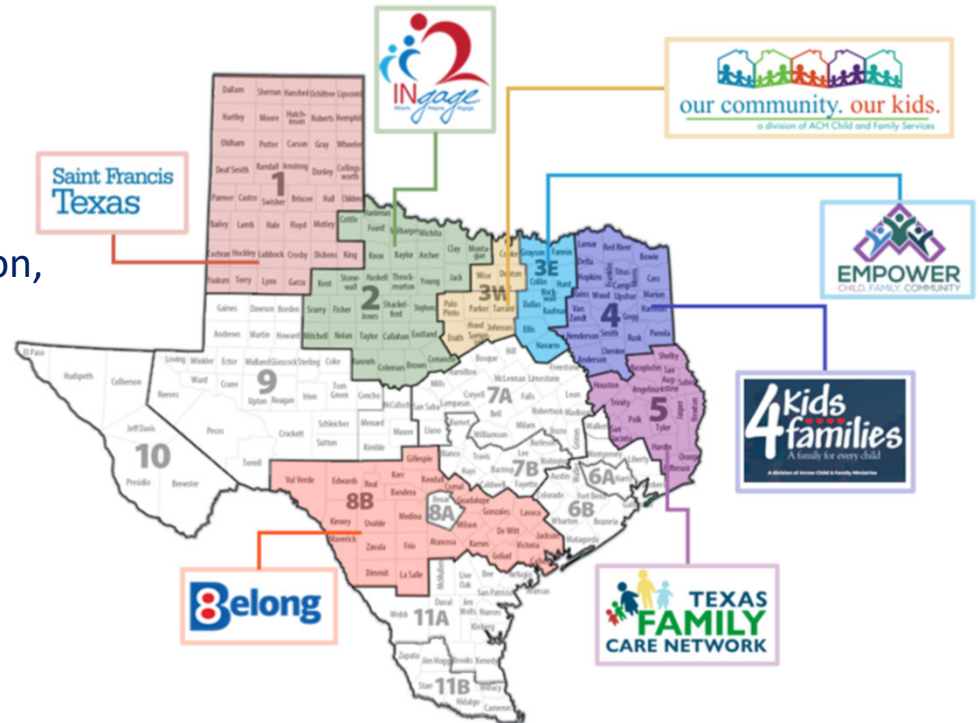


Community-Based Care: Stage II SSCC Performance Measures

Safety	For children not to experience abuse, neglect, or exploitation while in foster care.
Stability	To minimize the number of placement moves in foster care.
Home Settings	For children to live in home settings.
Proximity	For children to live within 50 miles of their home.
Sibling Groups	For sibling groups to be placed together.
Preparation for Adult Living	For youth who will age out of care to be prepared for adult living.
Kinship	For children to be placed with kin.
Texas ID / DL	Youth 16 and older access to a State ID / Driver's License
Permanency/Reunification	Reduce children's time in care.
Re-Intervention	Reduce future CPS intervention for children who exit care.

CBC Implementation- January 2025

- R1 - **Saint Francis** - Stage III
- R2 - **2INgage** - Stage III
- R3W - **OCOK** - Stage III (southern 7 counties), and Stage II (Cooke, Denton, and Wise)
- R3E - **EMPOWER**- Stage II
- R4 - **4Kids4Families** - Stage II
- R5 - **TFCN** - Stage II
- R8B - **Belong** - Stage III



CBC Future Implementation and Enhancements

Current Procurement Activities:

RFA for 6A, 6B, 8A, (10) was released on March 1, 2024.

- Responses were received for Regions 6A, 6B, and 8A; however, no responses were received for Region 10.
- Negotiations with respondents are underway.

Interagency Contract (IAC) with University of Texas at Austin for CBC Process Evaluation to understand the strengths and challenges of implementing CBC in Regions 1, 2, 3W, and 8B

Request for Information (RFI) for R9 and R10

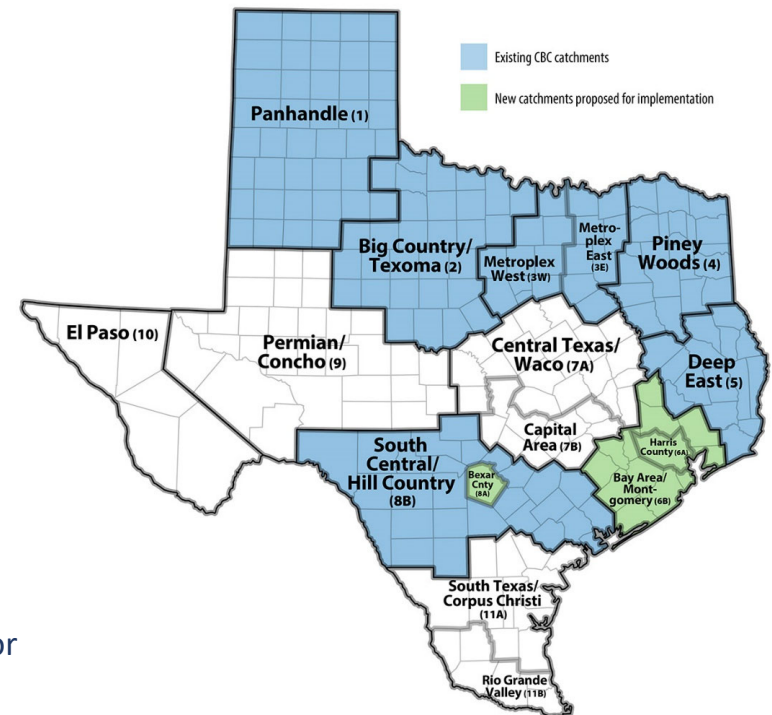
- Closed September 3, 2024. Provides crucial stakeholder feedback to inform the implementation of CBC in these rural regions.

Future Procurement Plans:

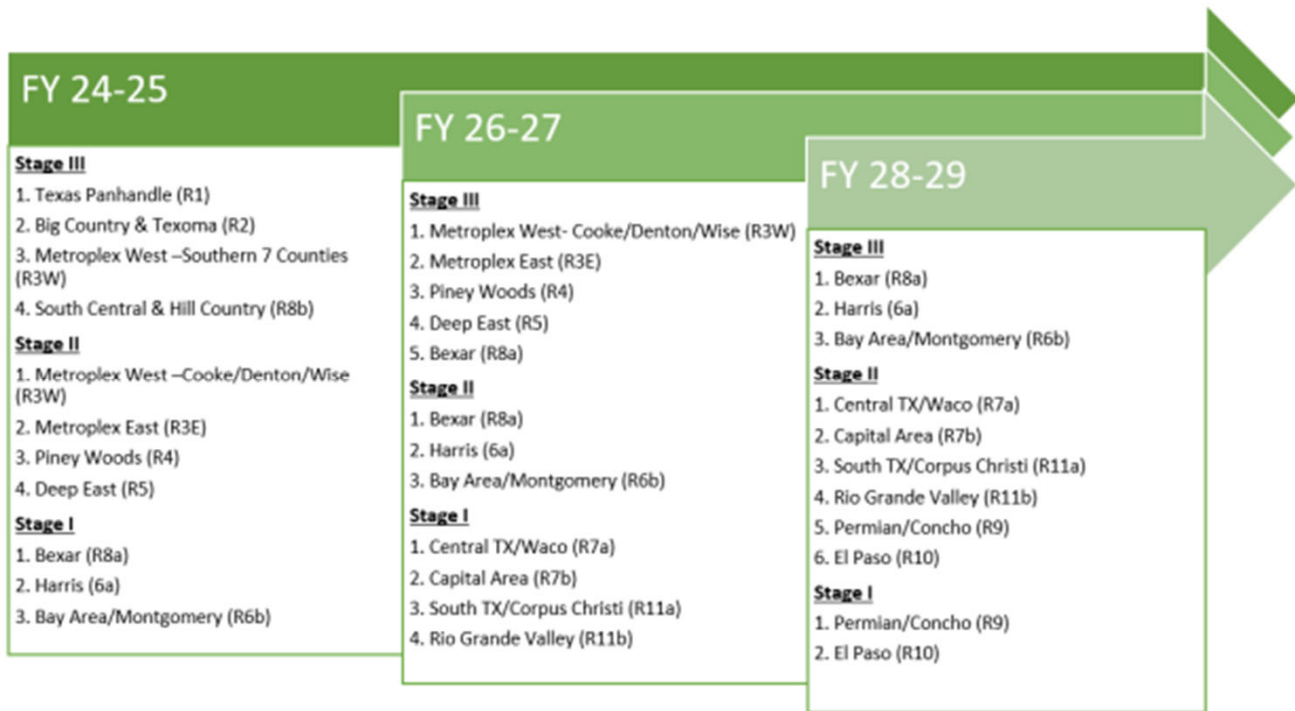
- Legislative Appropriations Request includes funding request for Regions 7A, 7B, 11A, and 11B

Unsolicited Proposals for Region 7A:

- Three were received in Fall 2024. DFPS will move to a competitive procurement/RFA



CBC Implementation Moving Forward



Resources

- CBC [Webpage](#): Current events and reports, SSCC and DFPS contact information, request a presentation (www.communitybasedcare.org)
- CBC Concerns or Complaints: CBCComplaints@dfps.texas.gov
- General CBC Inquiries: CBCare@dfps.Texas.gov





TEXAS
Department of Family
and Protective Services

Thank You

Community-Based Care Operations

Hollie Mims

Hollie.Mims@dfps.Texas.gov

512-239-9657